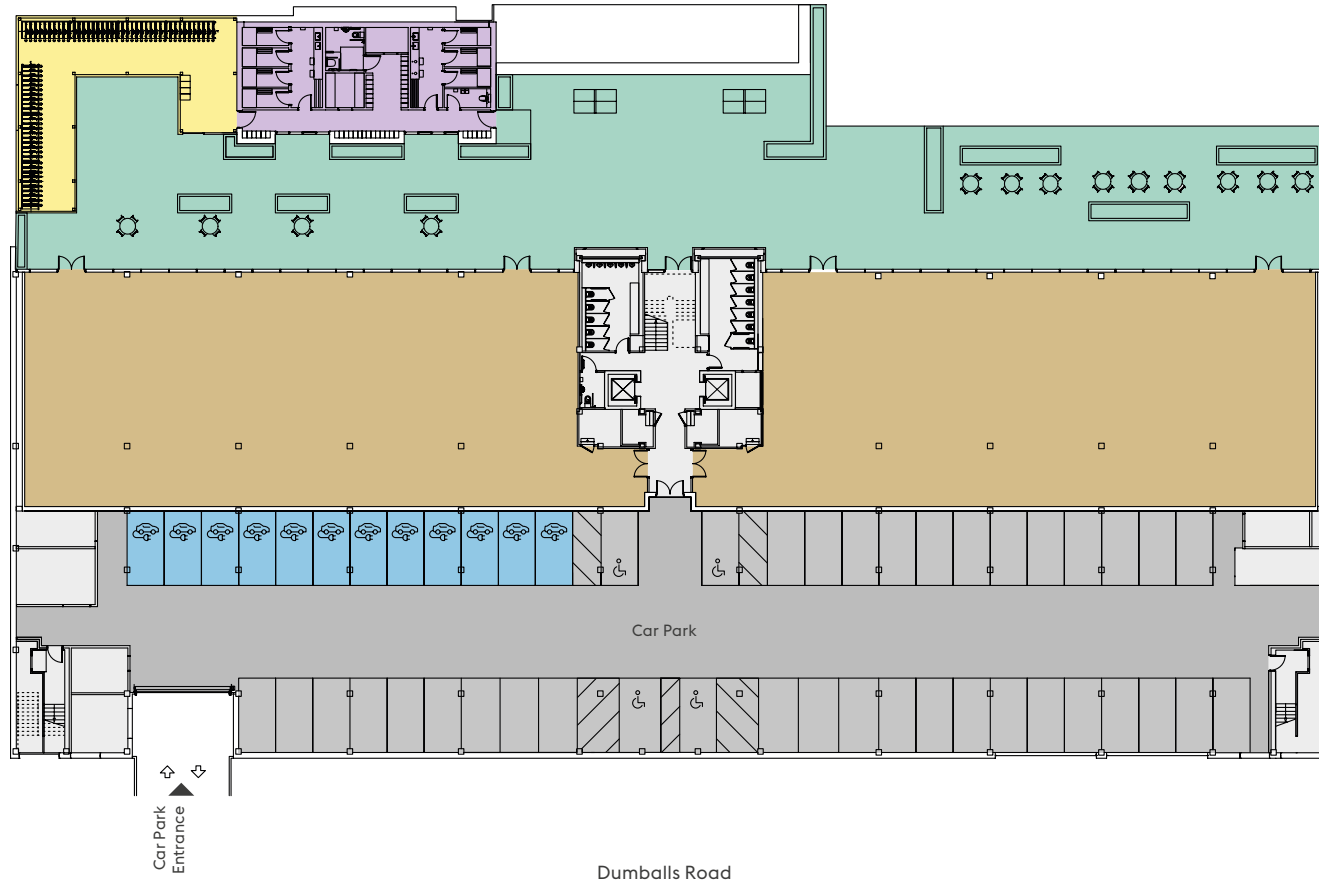


FUSION POINT ONE

GROUND FLOOR

12,024 SQ FT (1,118 SQ M)



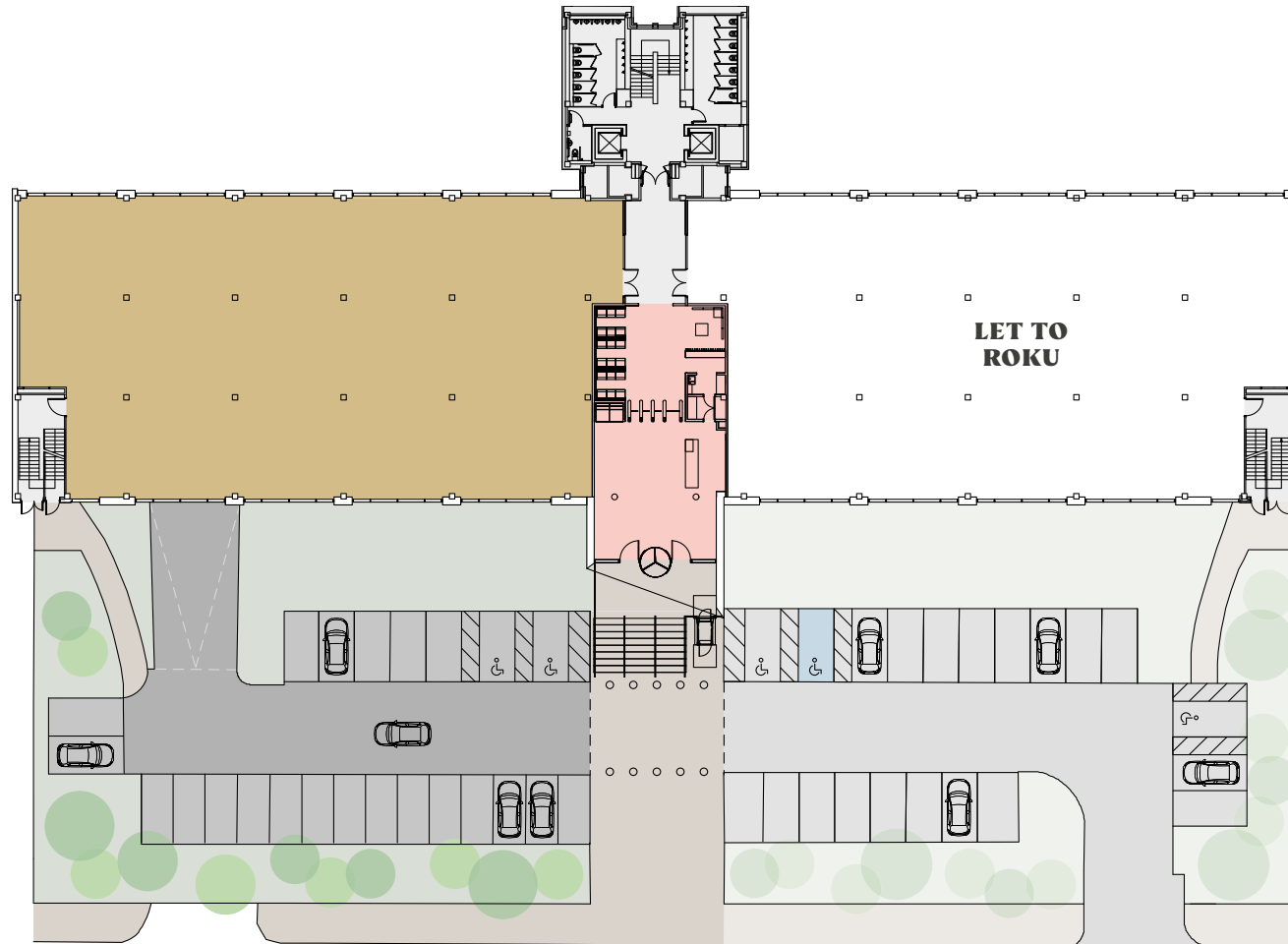
■ Floor ■ Cycle Store ■ Showers ■ Communal Area ■ Car Park ■ Electric Vehicle Car Spaces

For indicative purposes only. Not to scale.

FUSION POINT ONE

FIRST FLOOR NORTH

8,095 SQ FT (752 SQ M)



Dumballs Road



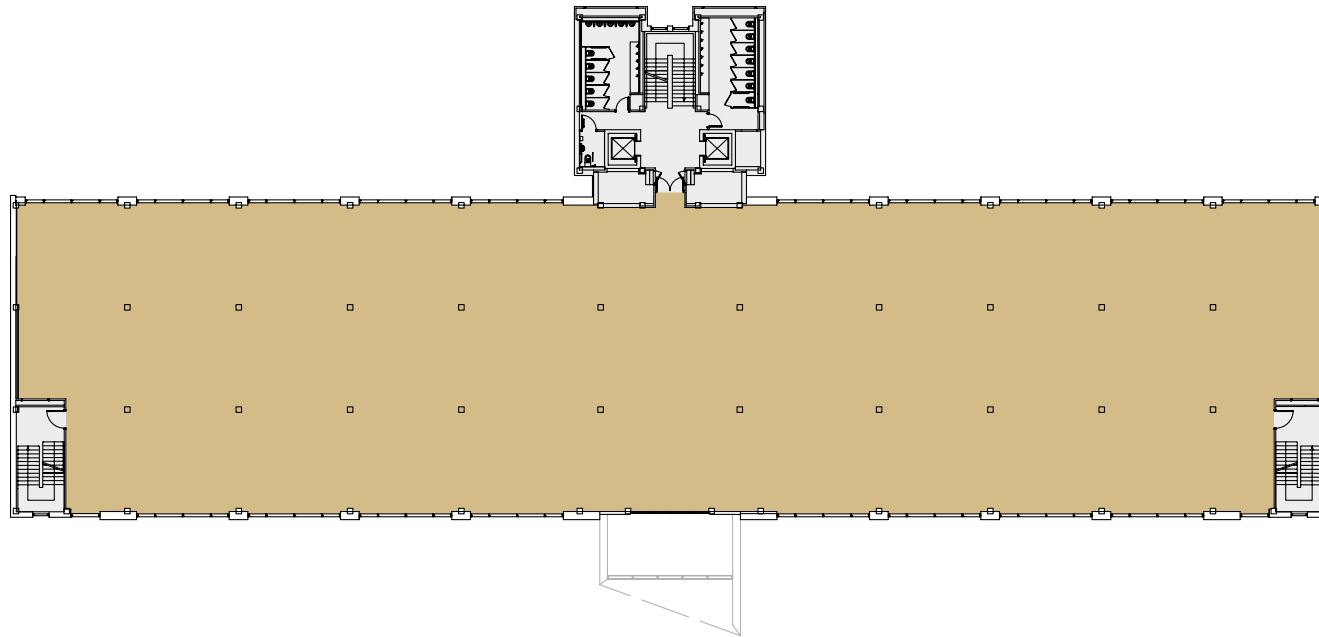
■ Floor ■ Reception ■ Car Park ■ Electric Vehicle Car Spaces

For indicative purposes only. Not to scale.

FUSION POINT ONE

TYPICAL UPPER FLOOR

17,686 SQ FT (1,643 SQ M) / 17,750 SQ FT (1,649 SQ M)



Dumballs Road



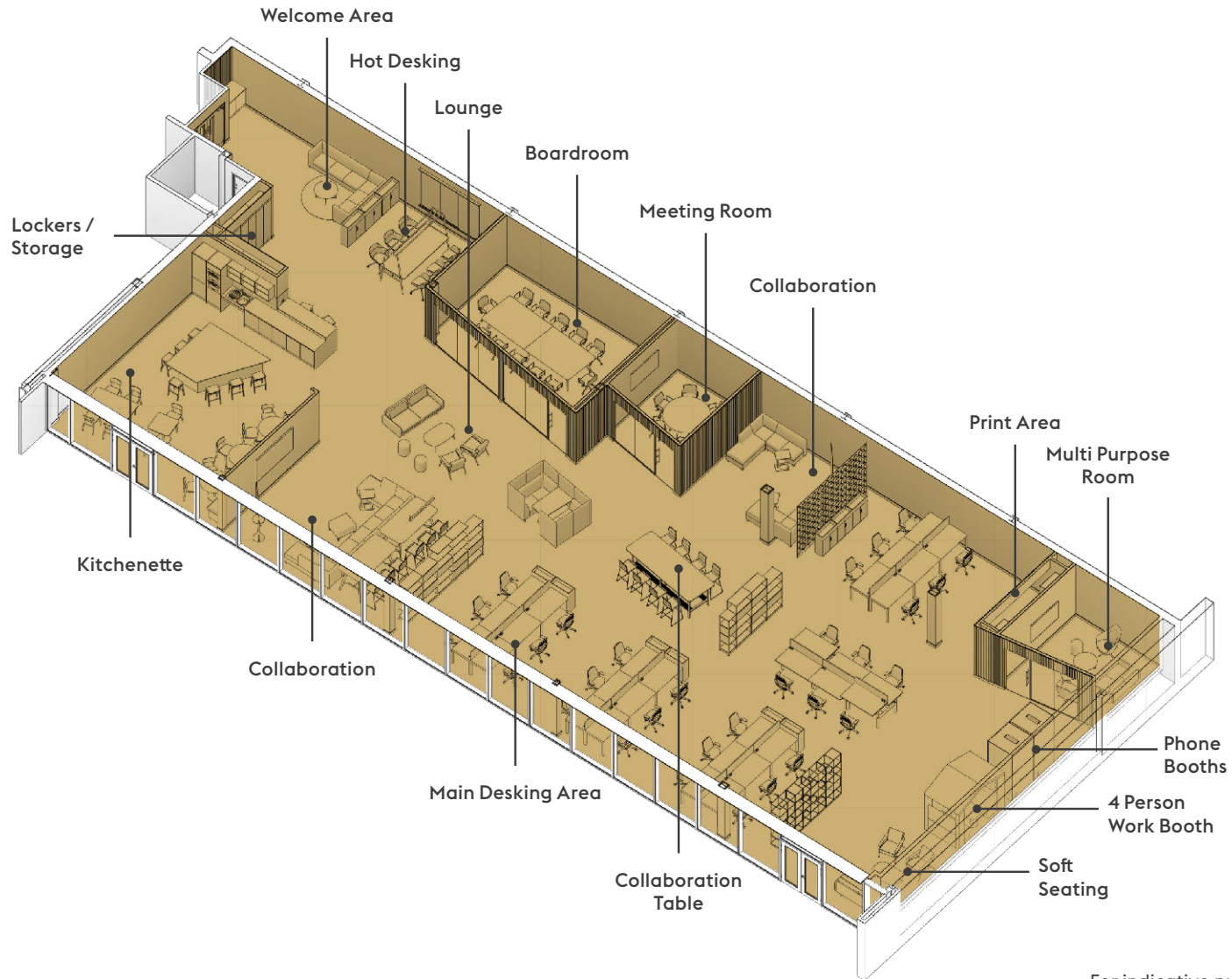
■ Floor

For indicative purposes only. Not to scale.

FUSION POINT ONE

GROUND FLOOR NORTH

6,012 SQ FT (559 SQ M)



**CAT A+
FULLY FITTED
WORKSPACE**



**12 PERSON
BOARDROOM**



**LOUNGE AND
SOFT SEATING
AREAS**



**PHONE
BOOTHS**

For indicative purposes only. Not to scale.